

**REQUEST FOR PROPOSAL**  
**YOCHA DEHE WINTUN NATION**  
**PUBLIC SUPPLY WELL REPLACEMENT PROJECT**  
**SEPTEMBER 16, 2025**

Introduction:

The Yocha Dehe Wintun Nation, a federally recognized tribal government (Tribe) is requesting proposals from experienced contractors (each, a Contractor) to install new water and power lines for integration of a new Public Supply Well, Casino Supply Well No. 4 (Well), in Brooks, California. The Well is being constructed for purposes of supplying potable water to the Tribe's existing supply and water distribution system customers. The potable water system is regulated by the U.S. Environmental Protection Agency (EPA).

The detailed project engineering specifications and design for the new Well are attached. The Tribe's Development Department will oversee implementation of the specifications. The Bid Item and Payment Sheet for the Well pricing is attached following the specifications.

Proposals will be selected based on an assessment of the total cost submitted on the attached Bid Item and Payment Sheet and the Contractor's ability to understand and complete the Project (as defined below).

The Tribe reserves the right to amend or supplement this Request for Proposal (RFP) by providing notice of such to all who have received the proposal document.

Description of Work:

Provide all labor, materials, equipment, tools, transportation, insurance, and services related to the Tribe's Public Supply Well Replacement Project (Project). Refer to all attached drawings, details, and specifications for the complete Project scope.

The scope includes, at a minimum, the following:

- Installation of 4,000 linear feet (lf) +/- of 1-6" Schedule 40 Conduit with power cables inside.
- Installation of 4,000 lf of 1-4" Schedule 40 conduit with pull rope for communication lines by others.
- Installation of all electrical and waterline installations running from Highway 16 to within 5 ft of proposed building of Well #4.
- Supply and install transformer per plan.
- Supply and install electrical cable vaults at 500' intervals.

- Supply and install bollards per the plans and specifications.
- Potholing to identify existing utilities in the main road prior to excavation.
- GRP locate 8" water main prior to excavation.
- Clear, grub, and final grade well pad per plan elevations.
- Pad construction must comply with geotechnical report.
- Grade/cut ditch per plan.
- Supply and install Caltrans class 1 rock over class 8 protection fabric per plan.
- Supply and install fire hydrant.
- Supply and install items captured on plan sheets C-301/21,22,23.
- Supply and install combo air/vacuum per plan.

Funding:

Funding for the Project is provided by the California Department of Water Resources Small Community Drought Relief Program. Prevailing wage rates and applicable apprenticeship requirements must be met. Contractors must have adequate insurance, including that required by California Labor Code Section 3700.

Contractor Qualifications:

Contractors must have a current California Contractor's License and be in good standing. Contractors will be contractually required to meet the attached Project specifications.

Bid Submittal:

The Tribe will receive proposals for said work as described herein until the close of business on October 16, 2025.

**Bids should be sent electronically to Michael Saenz, [msaenz@yochadehe.gov](mailto:msaenz@yochadehe.gov), and Sarah Morgan, [smorgan@yochadehe.gov](mailto:smorgan@yochadehe.gov).**

Please indicate the Contractor's earliest availability in the bid. The successful bidder will be required to sign a Yocha Dehe Wintun Nation contract that will include adherence to the attached Project specifications and provided Bid Item and Payment Sheet. Bids shall include all applicable sales tax.

The Tribe reserves the right to accept or reject any or all portions of a bid in its sole discretion. Further, the Tribe accepts no responsibility for any costs involved in preparing or submitting a bid. The Tribe also reserves the right to choose, in its judgment, the most appropriate proposal from those submitted, and to negotiate with the successful Contractor any changes in its proposal.

prior to, or as part of, awarding a contract. This RFP neither expresses nor implies any obligation on the part of the Tribe to enter into a contract with any Contractor submitting a proposal.

Contact Information:

Michael Saenz

Project Manager, Yocha Dehe Wintun Nation

Phone: (530) 796-6288

Email: [msaenz@yochadehe.gov](mailto:msaenz@yochadehe.gov)

Sarah Morgan

Natural Resources Manager, Yocha Dehe Wintun Nation

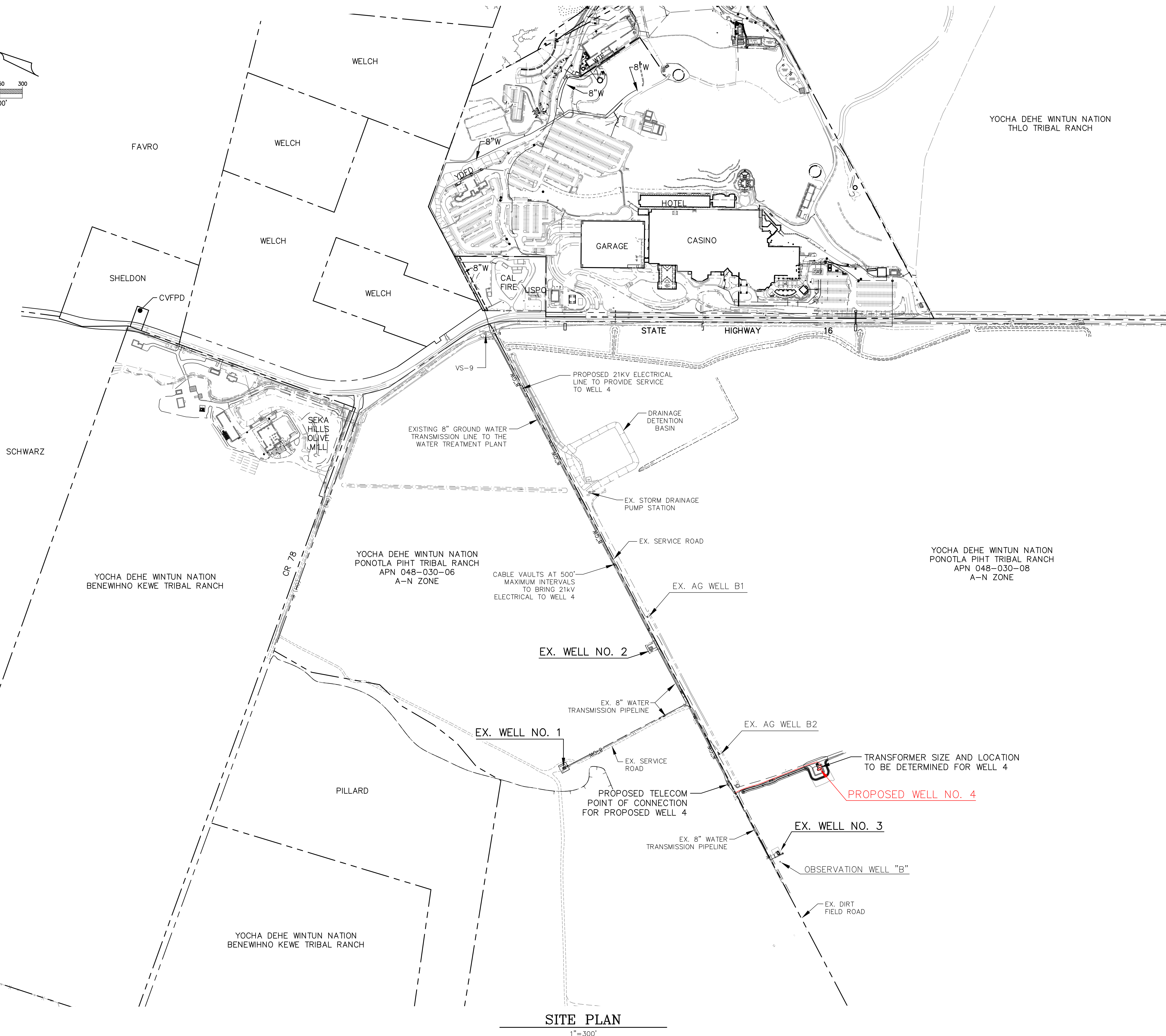
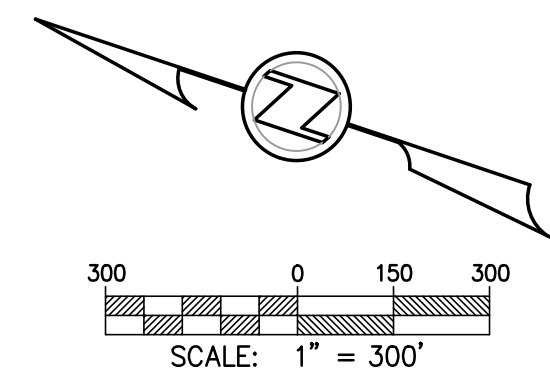
Phone: (530) 908-2816

Email: [smorgan@yochadehe.gov](mailto:smorgan@yochadehe.gov)

**Plan Set for the  
Yocha Dehe Wintun Nation  
Public Supply Well Replacement Project**

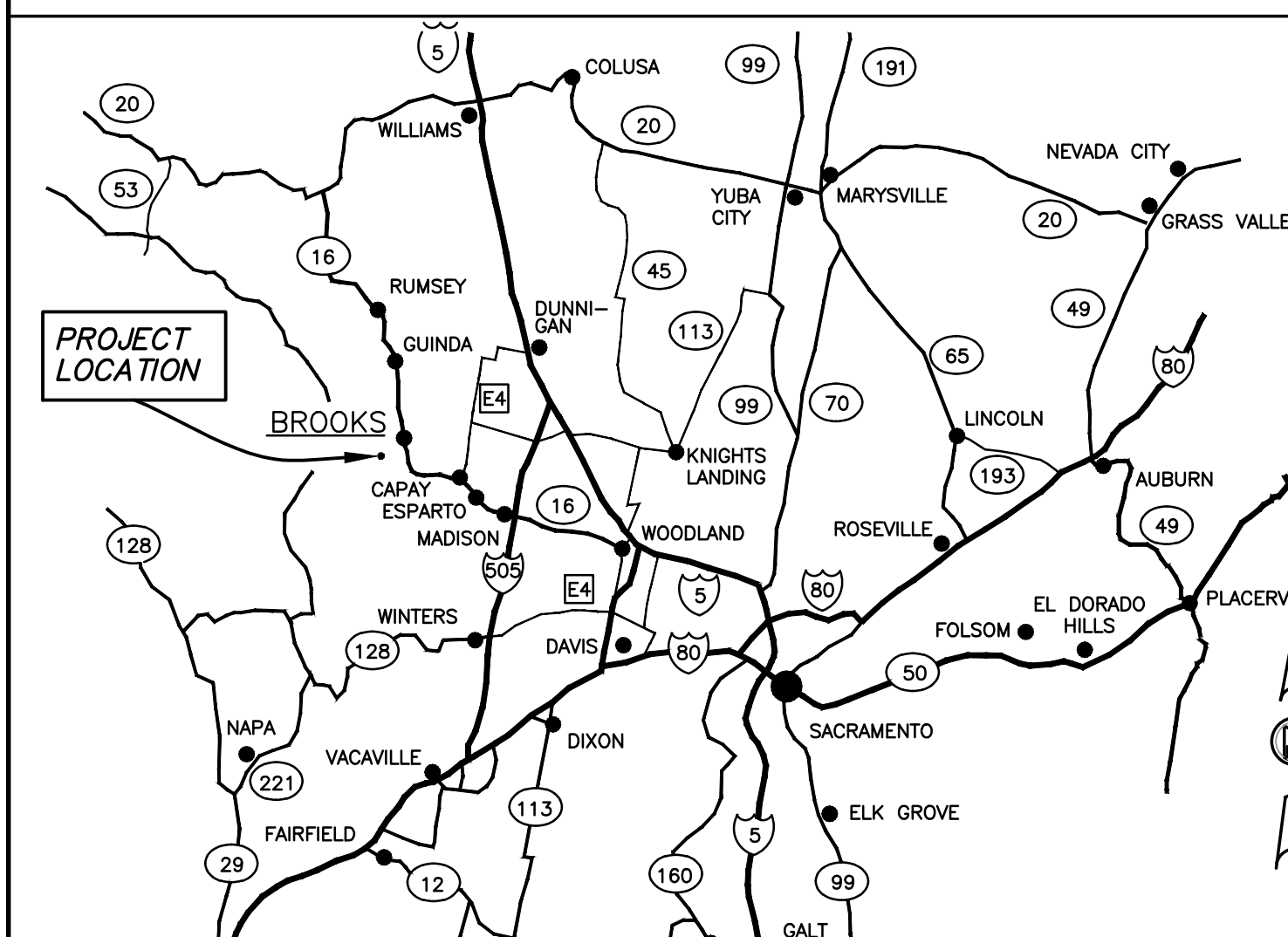


# PLANS FOR WATER WELL NO. 4 SITE IMPROVEMENTS AT CACHE CREEK CASINO RESORT



SITE PLAN  
1"=300'

LOCATION MAP



APPLICANT

CACHE CREEK CASINO RESORT C/O ADAM HART VICE PRESIDENT OF FACILITIES YOGHA DEHE WINTUN NATION	P.O. BOX 18 BROOKS, CA 95606 530-796-3400	APNs: 048-030-01 048-030-02
--	---	--------------------------------

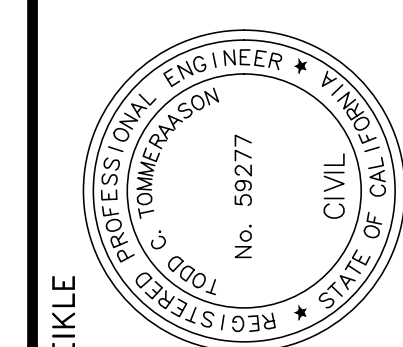
---

APPLICABLE CODES

2022 CBC, 2022 CMC, 2022 CPC, 2022 CFC, 2022 CEC AS AMENDED  
BY STATE OF CALIFORNIA AND TRIBAL BUILDING REGULATIONS.

## SHEET INDEX TABLE

PAGE NO.	SHEET NO.	SHEET TITLE
1	C-001	TITLE SHEET
2	C-002	ABBREVIATIONS, GENERAL NOTES & LEGEND
3	C-101	TOPOGRAPHIC SURVEY & UTILITY ROUTING
4	C-102	TOPOGRAPHIC SURVEY & UTILITY ROUTING
5	C-103	TOPOGRAPHIC SURVEY & UTILITY ROUTING
6	C-201	8in GW PLAN AND PROFILE
7	C-202	8in GW PLAN AND PROFILE
8	C-203	8in GW PLAN AND PROFILE
9	C-301	WELL NO 4 SITE GRADING PLAN
10	C-501	EROSION & SEDIMENTATION CONTROL PLAN
11	C-502	EROSION & SEDIMENTATION CONTROL PLAN
12	C-601	DETAILS
13	C-602	DETAILS
14	C-603	DETAILS
15	C-701	CROSS SECTIONS
16	C-801	EARTH DISTURBANCE PLAN
17	C-802	EARTH DISTURBANCE PLAN

[illegible]

LAUGENOUR AND  
TODD C. TOMMERAASON  
DATE 09/05/2025 P.E. 59277  
REGISTRATION EXPIRES 06-30-27

**LM**

**CIVIL ENGINEERING**  
**LAND SURVEYING**  
**PLANNING**

---

**LAUCOUR AND MEKE**

608 Court Street, Woodland, CA 95695  
Phone: (530) 662-7755  
Fax: (530) 662-4602

TITLE SHEET	
WATER WELL NO. 4 SITE IMPROVEMENTS CACHE CREEK CASINO RESORT BROOKS, YOLO CO., CA.	

JOB NO.	2303-746
DESIGNED	TCT
DRAWN	MSW
FILE	2303-746-C-001.DWG
CHECKED	TCT
DATE	09/05/2025
SCALE	1"=300'

DRAWING  
C-001

SHEET 1 OF 17

YDWN
------



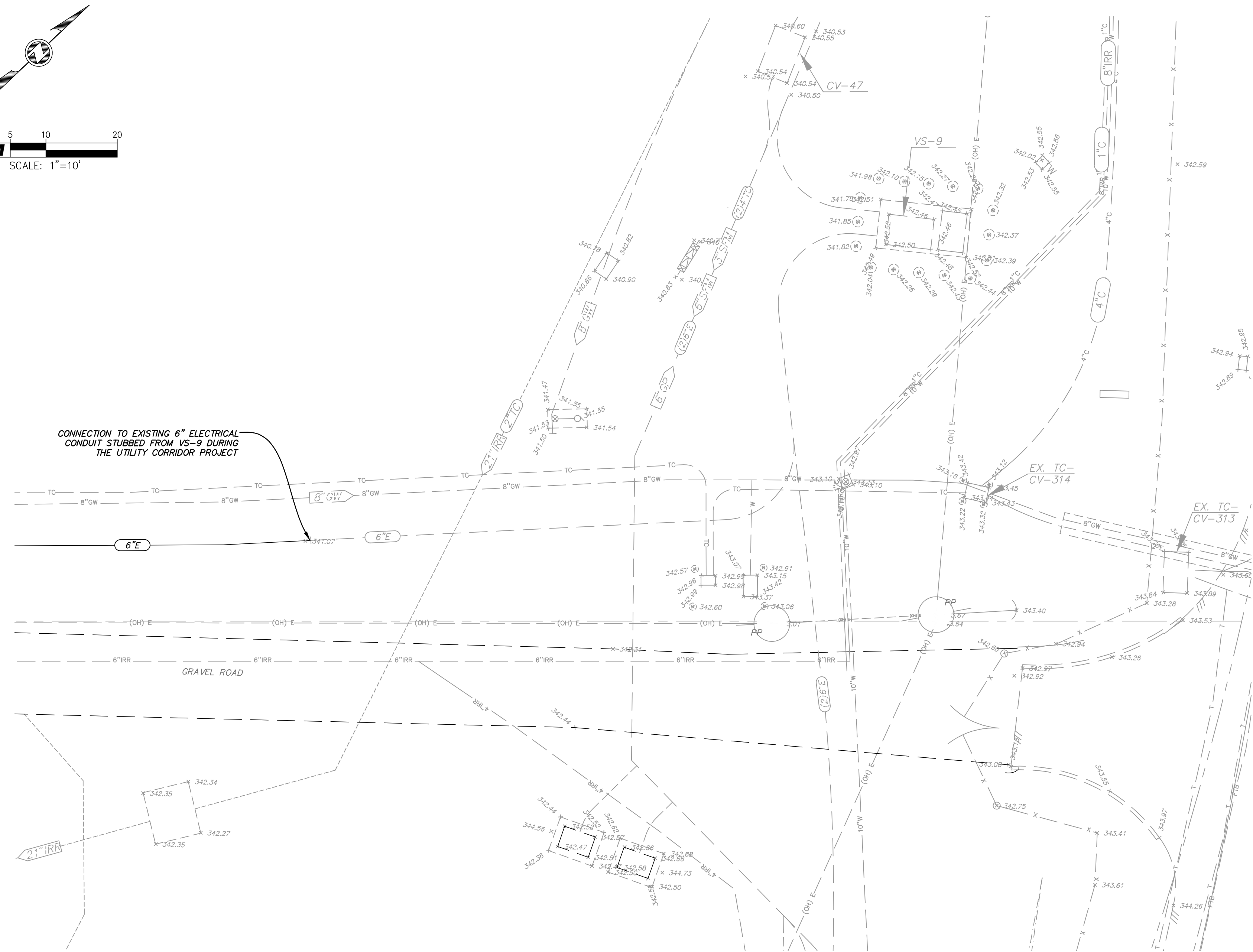
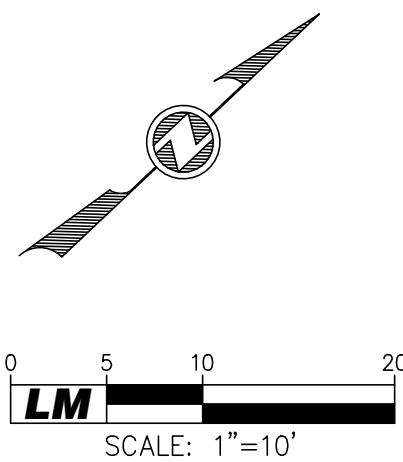
A		B	C	D	E	F	G	H	I	J		
ABBREVIATIONS		GENERAL NOTES										BY
8	AB	AGGREGATE BASE	1. STANDARDS, PLANS & PERMITS	2. UNLESS SHOWN OR SPECIFIED OTHERWISE, ALL WORK SHALL BE IN ACCORDANCE WITH THESE PLANS, AND WITH THE LATEST EDITION OF THE COUNTY OF SACRAMENTO PUBLIC WORKS AGENCY STANDARD CONSTRUCTION SPECIFICATIONS (SCSSS) AND THE SACRAMENTO AREA SEWER DISTRICT STANDARDS AND SPECIFICATIONS (SASDSS).	3. CONFLICTS	4. THE CONTRACTOR SHALL NOTIFY THE ENGINEER PRIOR TO PERFORMING ANY CORRECTIVE ACTION REQUIRED DUE TO UNFORESEEN CONFLICTS IN THE IMPROVEMENT PLANS OR DUE TO POSSIBLE STANDARD CONSTRUCTION SPECIFICATIONS (SCSSS) AND THE SACRAMENTO AREA SEWER DISTRICT STANDARDS AND SPECIFICATIONS (SASDSS).	5. OBSTRUCTIONS	6. THE CONTRACTOR SHALL REMOVE ALL OBSTRUCTIONS, BOTH ABOVE GROUND AND UNDERGROUND, AS NOTED IN ITEM 2 ABOVE, AS NECESSARY FOR THE CONSTRUCTION OF THE PROPOSED IMPROVEMENTS. WHEN FEASIBLE, SUCH WORK SHALL BE COMPLETED PRIOR TO GRADING.	7. PUBLIC SAFETY AND TRAFFIC CONTROL	8. THE CONTRACTOR SHALL ENSURE THAT PERSONS MAKING HEAT FUSION JOINTS HAVE RECEIVED TRAINING IN THE MANUFACTURER'S RECOMMENDED PROCEDURE. THE CONTRACTOR SHALL MAINTAIN RECORDS OF TRAINED PERSONNEL, AND SHALL CERTIFY THAT TRAINING WAS RECEIVED NOT MORE THAN 12 MONTHS BEFORE COMMENCING CONSTRUCTION. EXTERNAL AND INTERNAL BEADS SHALL NOT BE REMOVED.	9. LEGEND	10. PIPELINE CONSTRUCTION
	AC	ASPHALT CONCRETE										
	APPROX.	APPROXIMATELY										
	ASB	AGGREGATE SUBBASE										
	ASSY.	ASSEMBLY										
	BC	BEGIN CURVE										
	BED	BACK EDGE OF WALK										
	BUILDING	BUILDING										
	BF	BOTTOM OF FOOTING										
	BK	BACK MARK										
7	BOW	BOW OF CURB										
	BP	BLOW-OFF VALVE										
	BPR	BACKFLOW PREVENTER										
	BTM	BOTTOM										
	BTM	BOTTOM VERTICAL CURVE										
	BW	BOTTOM OF WALL										
	CA	CAST-IN-PLACE CONCRETE										
	CAV	COMBINATION AIR & VACUUM VALVE										
	CAO	CATCH BASIN										
	CB	CATCH BASIN										
6	CD	CATCH BASIN CENTER										
	CE	CAST IRON PIPE										
	CP	CAST-IN-PLACE CONCRETE PIPE										
	CJ	CONSTRUCTION JOINT										
	CL	CLASS										
	CLR	CLEAR OR CLEARANCE										
	CO	CLEANOUT TO GRADE										
	COTG	CONCRETE										
	CON	CONSTRUCT										
	CONT	CONTROL OR CONTINUOUS										
5	COORD	COORDINATE										
	COR	CORNER										
	CP	CORNER PIPE										
	CP	CORNER POLYETHYLENE PIPE										
	CR	CURB RETURN										
	CS	CORRUGATED STEEL PIPE										
	CIV	CHECK VALVE										
	CD	CROSSWALK										
	CD	CROSSWALK										
	CD	CROSSWALK										
4	DCV	DOUBLE CHECK VALVE										
	DI	DRAINAGE INLET										
	DIP	DUCTILE IRON PIPE										
	DIS	DOWNSPOUT										
	DTL	DETAIL										
	DW	DRIVEWAY										
	DWG	DRAWING										
	(E)	EXISTING										
	EAST	EASEMENT										
	EC	EDGE OF PAVEMENT										
3	ELEV.	ELEVATION										
	EP	EXPANSION JOINT										
	EQUIV.	EQUIVALENT										
	EX	EXISTING										
	EX	EXISTING										
	EXT.	EXTENSION										
	EXT.	EXTENSION										
	EXT.	EXTENSION										
	EXT.	EXTENSION										
	EXT.	EXTENSION										
2	FD	FLOOR DRAIN										
	FD	FLOOR DRAIN										
	FD	FLOOR DRAIN										
	FD	FLOOR DRAIN										
	FD	FLOOR DRAIN										
	FD	FLOOR DRAIN										
	FD	FLOOR DRAIN										
	FD	FLOOR DRAIN										
	FD	FLOOR DRAIN										
	FD	FLOOR DRAIN										
1	FEW	FRONT EDGE OF WALK										
	FEW	FRONT EDGE OF WALK										
	FEW	FRONT EDGE OF WALK										
	FEW	FRONT EDGE OF WALK										
	FEW	FRONT EDGE OF WALK										
	FEW	FRONT EDGE OF WALK										
	FEW	FRONT EDGE OF WALK										
	FEW	FRONT EDGE OF WALK										
	FEW	FRONT EDGE OF WALK										
	FEW	FRONT EDGE OF WALK										

ABBREVIATIONS, GENERAL NOTES & LEGEND		WATER WELL NO. 4 SITE IMPROVEMENTS		CACHE CREEK CASINO RESORT		BROOKS, YOLO CO., CA.	
JOB NO. 2303-746		DESIGNED TCT		DRAWN MSW		CHECKED TCT	
FILE 2303-746-C-002.DWG		DATE 09/05/2025		SCALE N/A		SHEET 2 OF 17	
YOWN							



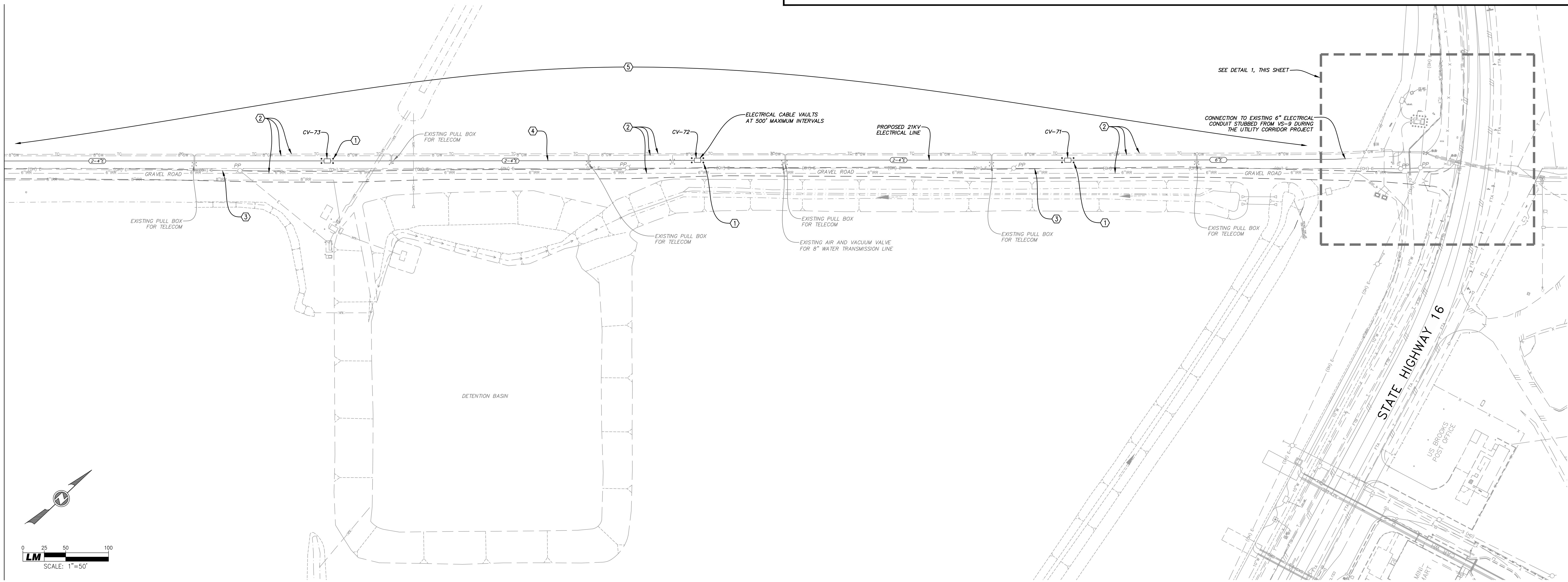
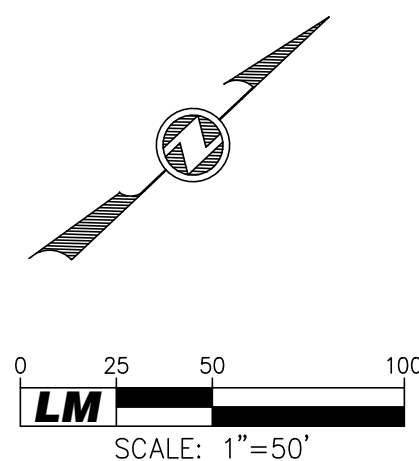
CONSTRUCTION NOTES:

1. INSTALL 4 BOLLARDS PROTECTING EACH CABLE VAULT PER DETAIL B/C-601. COORDINATE FINAL LOCATION OF BOLLARDS WITH THE DEVELOPMENT DEPARTMENT AND ENGINEER PRIOR TO INSTALLATION.
2. CAUTION!! EXISTING UTILITIES TO REMAIN IN PLACE. CONTRACTOR SHALL PROTECT UTILITIES AS REQUIRED DURING CONSTRUCTION. CONTRACTOR SHALL POTHOLE AND VERIFY DEPTH AND LOCATION AS FIRST ORDER OF WORK AND NOTIFY ENGINEER OF ANY CONFLICTS.
3. CAUTION!! OVERHEAD ELECTRICAL LINES.
4. FINAL ROUTE OF ELECTRICAL LINE TO BE DETERMINED AFTER POTHOLING IS COMPLETED FOR THE EXISTING IRRIGATION LINES AND THE 8" WATER LINE AND 2" COMMUNICATION LINES.
5. ONCE THE 8" WATER LINE AND 2" TELECOM ARE LOCATED IT WILL NEED TO BE DETERMINED WHICH TREES NEED TO BE REMOVED. CUT TREES AT BASE ABOVE GRADE AND APPLY CHEMICALS AS NEEDED TO KILL THE EXISTING STUMPS. THE STUMPS ARE NOT TO BE REMOVED AS THIS MAY DAMAGE THE EXISTING WATER LINE TO THE WATER TREATMENT FACILITY.



1 ELECTRIC CONNECTION DETAIL

SEE SHEET C102



REV. NO.	DATE	REVISION	BY

REGISTERED PROFESSIONAL ENGINEER  
No. 59277  
CIVIL  
STATE OF CALIFORNIA

LAUGENOUR AND MEKLE  
BY   
TODD C. TOMMERASON  
DATE 09/05/2025 P.E. 59277  
REGISTRATION EXPIRES 06-30-27

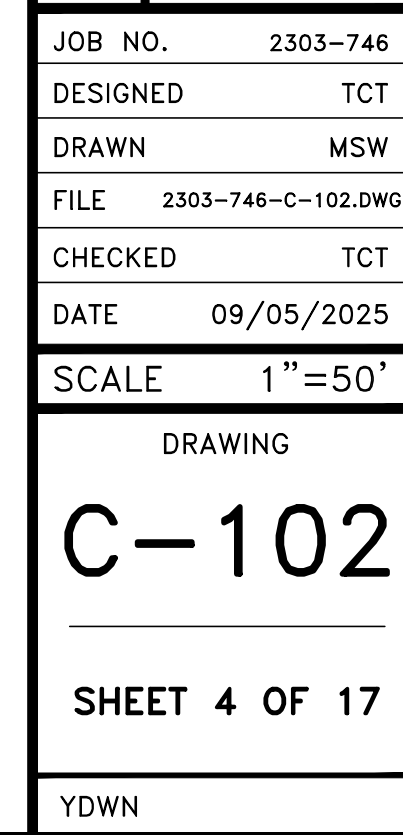
CIVIL ENGINEERING  
LAND SURVEYING  
PLANNING

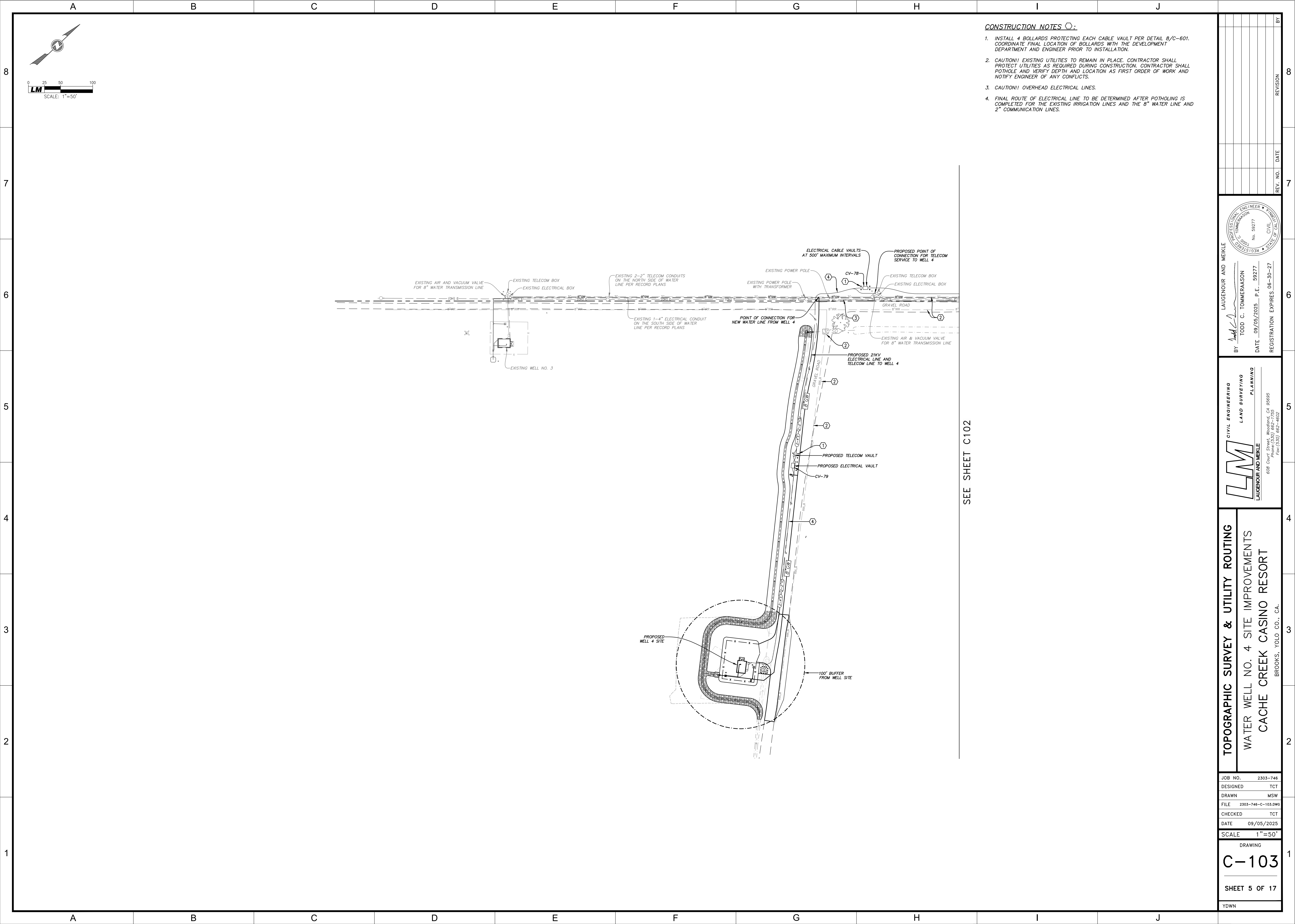
LAUGENOUR AND MEKLE  
608 Court Street, Woodland, CA 95695  
Phone (530) 862-7755  
Fax (530) 862-4022

TOPOGRAPHIC SURVEY & UTILITY ROUTING

WATER WELL NO. 4 SITE IMPROVEMENTS  
CACHE CREEK CASINO RESORT  
BROOKS, YOLO CO., CA.

JOB NO.	2303-746
DESIGNED	TCT
DRAWN	MSW
FILE	2303-746-C-101.DWG
CHECKED	TCT
DATE	09/05/2025
SCALE	AS SHOWN
DRAWING	C-101
SHEET 3 OF 17	
YDWN	

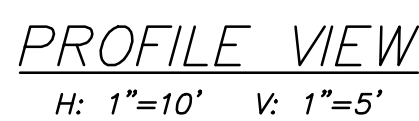




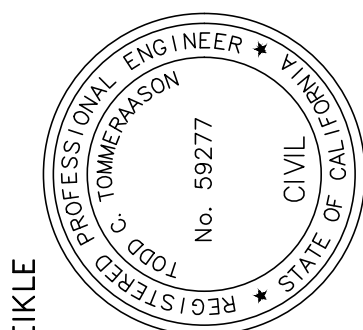




SEE SHEET C202



- CONSTRUCTION NOTES (C):**
1. MAINTAIN 6" MINIMUM CLEAR BETWEEN STORM DRAIN. AT ALL LOCATIONS WHERE THE WATER MAIN CROSSES BELOW STORM DRAIN, CENTER THE PIPE SO THAT THE JOINTS ARE 10' FROM THE STORM DRAIN, TYPICAL FOR ALL OTHER UTILITIES. MAINTAIN 1' OF CLEAR SPACE BETWEEN UTILITIES.
  2. INSTALL 8" DIA. PVC C900 DR18 WATER LINE PER SSCSS, SEE DETAIL 3/C-601.
  3. ALL ELECTRICAL INSTALLATIONS TO COMPLY WITH THE ELECTRICAL PLANS BY M. NEILS.
  4. INSTALL ELECTRICAL CABLE VAULT PER M. NEILS ELECTRICAL PLANS AND DETAIL 1/C-603.
  5. INSTALL TELECOM VAULT PER DETAIL 2/C-603.
  6. INSTALL 1" COMBINATION AIR/VACUUM VALVE PER DETAIL 1/C-601.
  7. INSTALL CUT IN TEE PER DETAIL 2/C-601 WITH 8" GATE VALVES GOING WEST AND SOUTH PER DETAIL 5/C-601. CONTRACTOR TO COORDINATE WITH SITE SO THAT WELL 3 BE RECONNECTED FROM THE 8" GROUNDWATER INTERMEDIATE MAIN FOR AS SHORT A TIME AS POSSIBLE.
  8. INSTALL JOINT TRENCH PER DETAIL 3/C-603.
  9. HATCHING DENOTES INSTALLATION OF CALTRANS CLASS 1 ROCK SLOPE PROTECTION ON CALTRANS CLASS 8 ROCK SLOPE PROTECTION FABRIC. DISCARGUE AS NECESSARY SO THAT THE TOP OF THE ROCKS ARE FLUSH WITH THE FINISHED GRADE.
  10. INSTALL APPROXIMATELY 10' LENGTH OF 30" DIAMETER HDPE (ADS N-12 WITH WATERIGHT JOINTS OR EQUIVALENT) PER SSCSS. SLOPE TO MATCH THE EXISTING CUT UNDER THE EXISTING 4" ELECTRICAL LINE. INSTALL FLORED END SECTION ON THE WEST END PER CALTRANS STANDARD DRAWING D94A. REMOVE THE EXISTING FLUORBOARD RISER AS NECESSARY BEFORE EXTENDING THE EXISTING CULVERT.
  11. CURRENTLY THE PROFILE SHOWS ROTATING THE NEW TEE AT A 45 DEGREE ANGLE TO GET UNDER THE EXISTING 4" ELECTRICAL LINE. IF AFTER EXCAVATION IT IS DETERMINED THAT 6" CLEARANCE CAN NOT BE OBTAINED BETWEEN THE NEW WATER LINE AND THE EXISTING ELECTRICAL IT WILL BE NECESSARY TO INSTALL A 90 DEGREE FITTING TO CONNECT TO THE EXISTING WATER LINE OR POSSIBLY DIG BACK IN THE EAST AND WEST DIRECTIONS TO GET UNDER THE EXISTING 4" EXISTING ELECTRICAL CONDUIT CAN BE ADJUSTED TO OBTAIN NECESSARY CLEARANCE. CONTRACTOR TO COORDINATE WITH THE ENGINEER AND THE DEVELOPMENT DEPARTMENT ON THE PREFERRED COURSE OF ACTION AFTER THE AREA HAS BEEN UNCOVERED AND INSPECTED.
  12. CAUTION!! EXISTING UTILITIES TO REMAIN IN PLACE. CONTRACTOR SHALL PROTECT UTILITIES AS REQUIRED DURING CONSTRUCTION. CONTRACTOR SHALL PHOTOGRAPH AND DOCUMENT THE LOCATION AS FIRST ORDER OF WORK AND NOTIFY ENGINEER OF ANY CONFLICTS.
  13. INSTALL BOLLARDS PROTECTING THE CABLE VAULT, TELECOM VAULT AND AIR RELEASE VALVE PER DETAIL 8/C-601. COORDINATE FINAL LOCATION OF BOLLARDS WITH THE DEVELOPMENT DEPARTMENT AND ENGINEER PRIOR TO INSTALLATION.
  14. CAUTION!! OVERHEAD ELECTRICAL LINES.
  15. FINAL ROUTE OF ELECTRICAL LINE IS TO BE DETERMINED AFTER POT HOLE IS COMPLETED FOR THE EXISTING IRRIGATION LINES AND THE 8" WATER LINE AND 2" COMMUNICATION LINES.
  16. COORDINATE WITH SITE ON ANY ROAD WIDENING NEEDED IN THIS AREA.

[illegible]

LAUGENOUR AND  
BY Todd C. Tommerrason  
TODD C. TOMMERRASON  
DATE 09/05/2025 P.E. 59277  
REGISTRATION EXPIRES 06-30-27

**LM**  
CIVIL ENGINEERING  
LAND SURVEYING  
PLANNING  
LAUGENOUR AND MEKLE  
608 Court Street, Woodland, CA 95695  
Phone: (530) 662-1755  
Fax: (530) 662-4602

## 8in GW PLAN AND PROFILE

WATER WELL NO. 4 SITE IMPROVEMENTS  
CACHE CREEK CASINO RESORT

BROOKS. YOLO CO., CA.

JOB NO.	2303-746
DESIGNED	TCT
DRAWN	MSW
FILE	2303-746-C-201.DWG
CHECKED	TCT
DATE	09/05/2025
SCALE AS SHOWN	

DRAWING

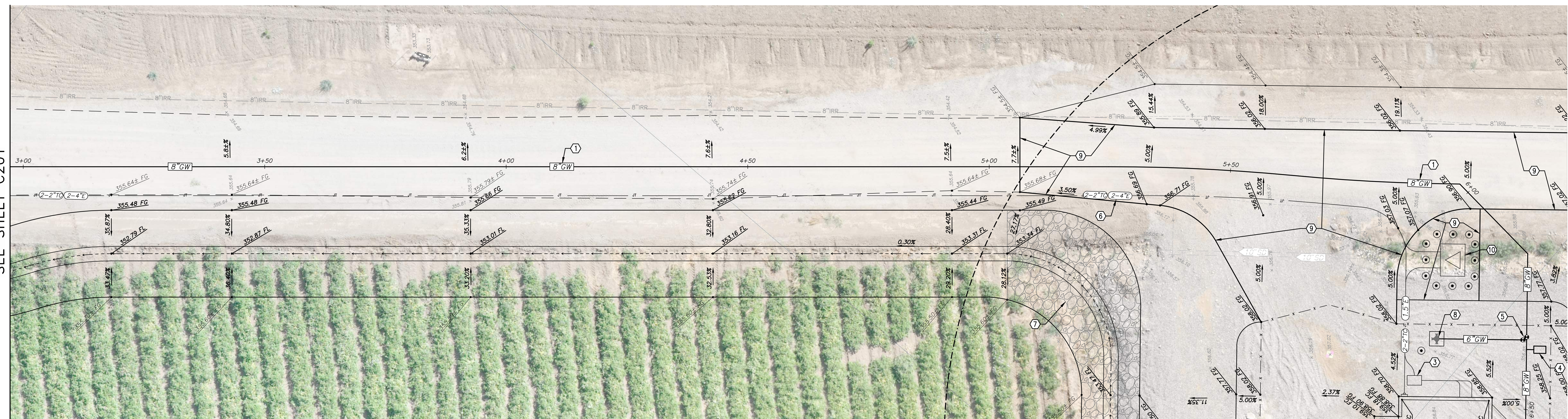
C-201

---

SHEET 6 OF 17

YDWN





SEE SHEET C203



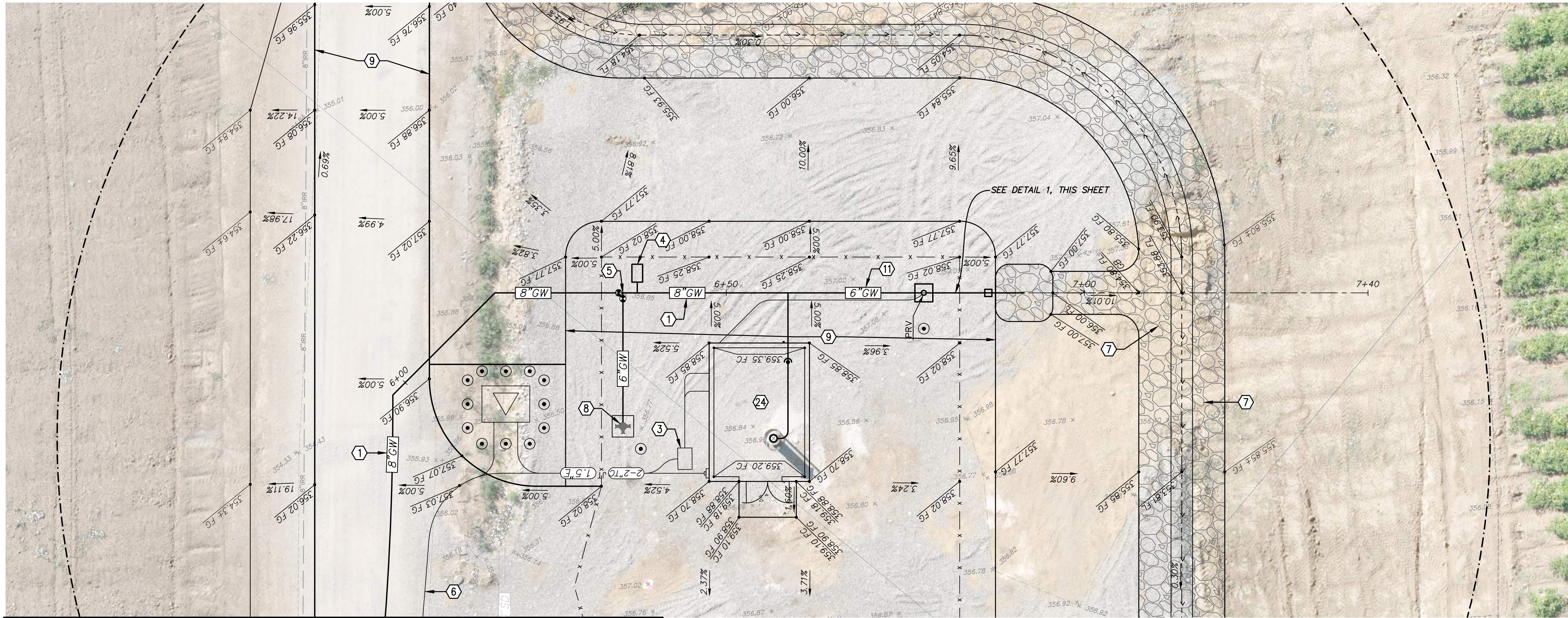
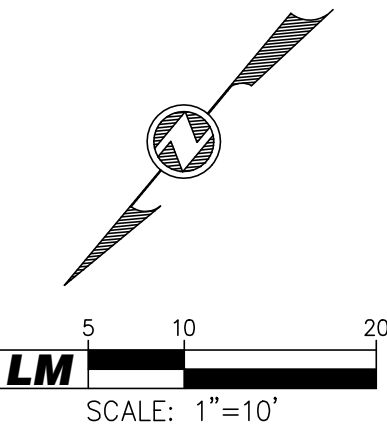
- [illegible]

**8in GW PLAN AND PROFILE**

WATER WELL NO. 4 SITE IMPROVEMENTS  
CACHE CREEK CASINO RESORT  
BROOKS, YOLO CO., CA.

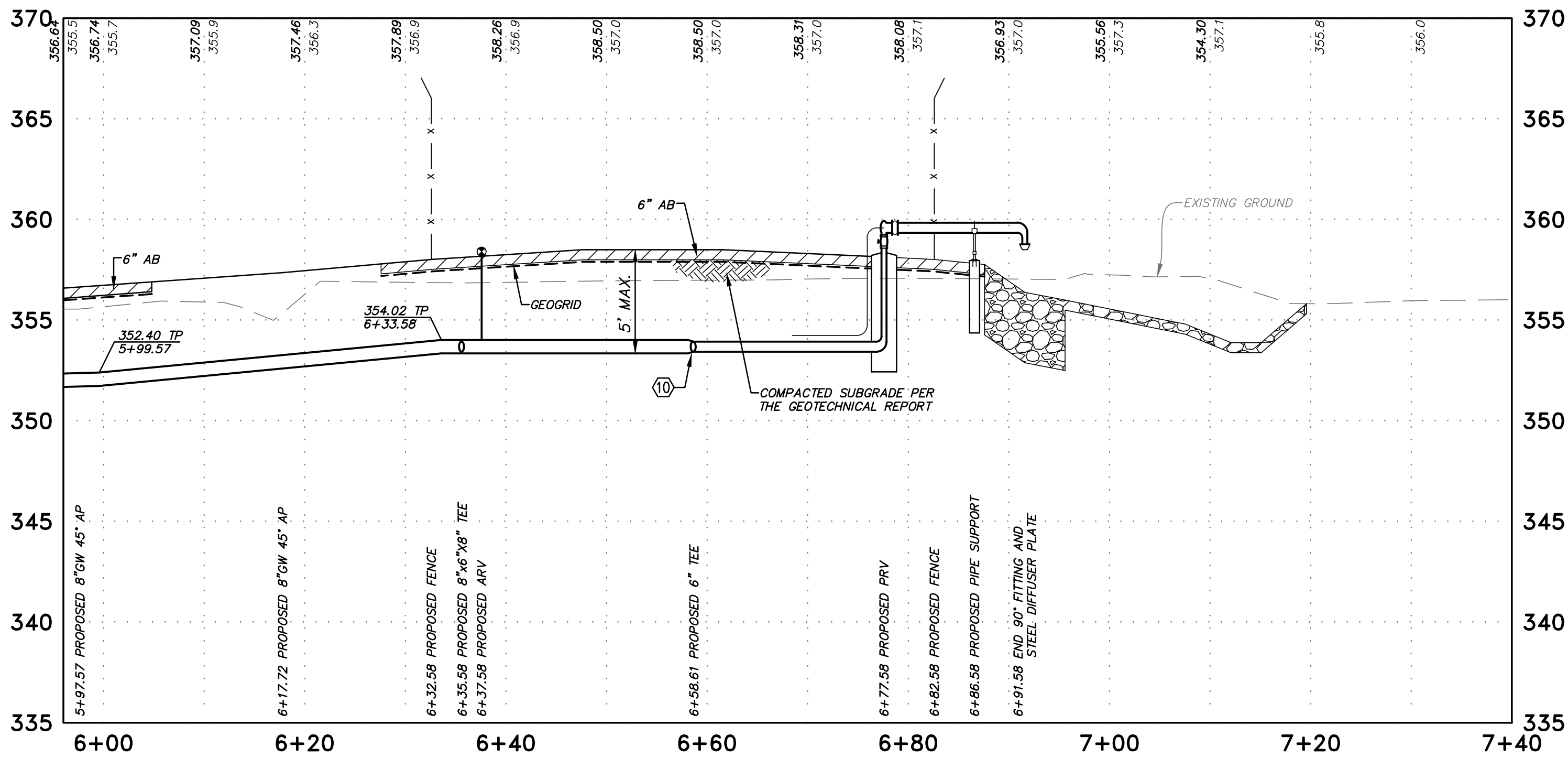
DRAWING  
**C-202**  
SHEET 7 OF 17  
YDWN



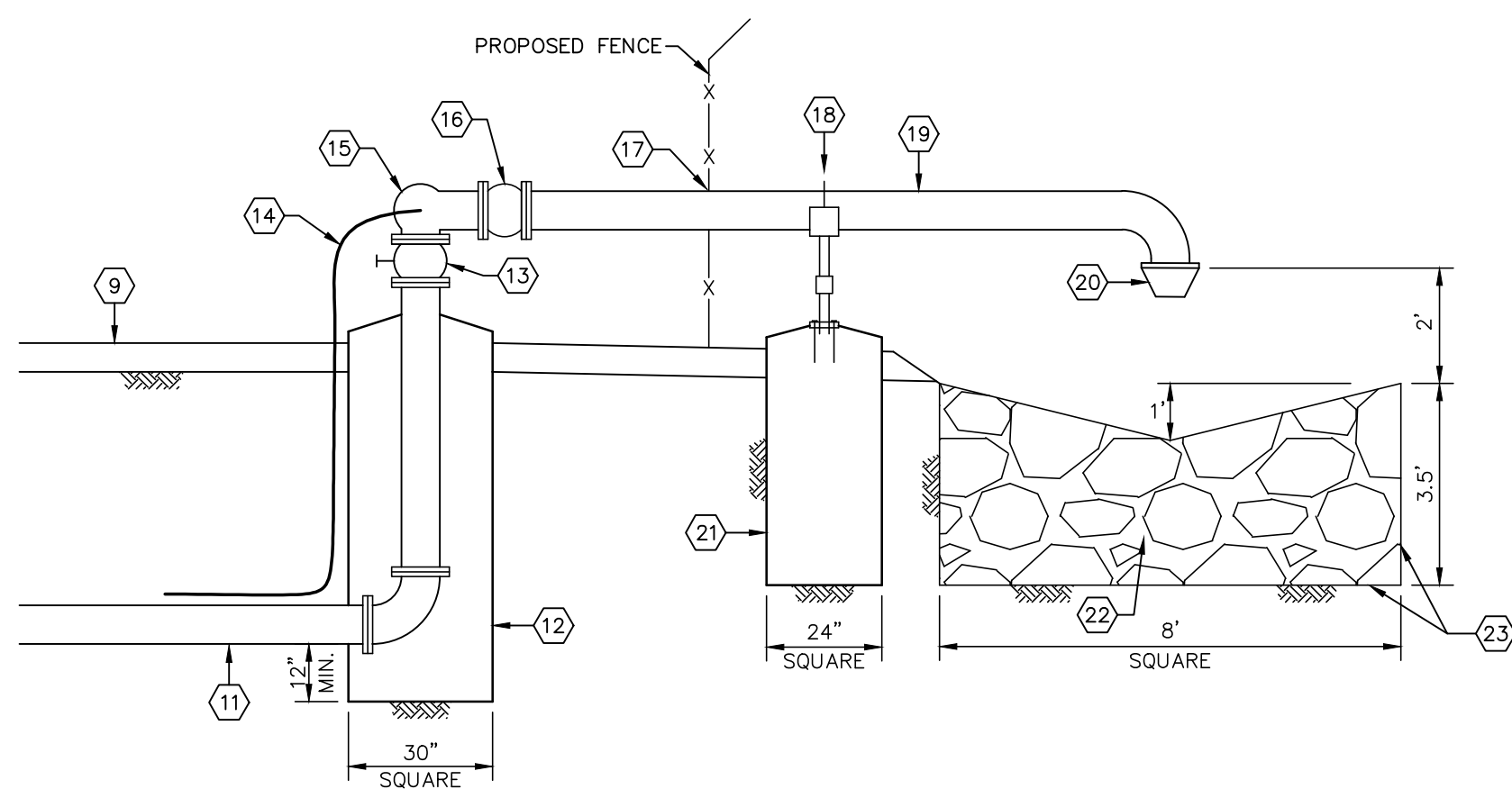


SEE SHEET C202

PLAN VIEW  
1"=10'



PROFILE VIEW  
H: 1"=10' V: 1"=5'



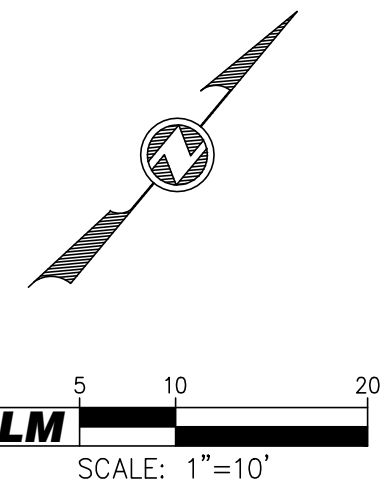
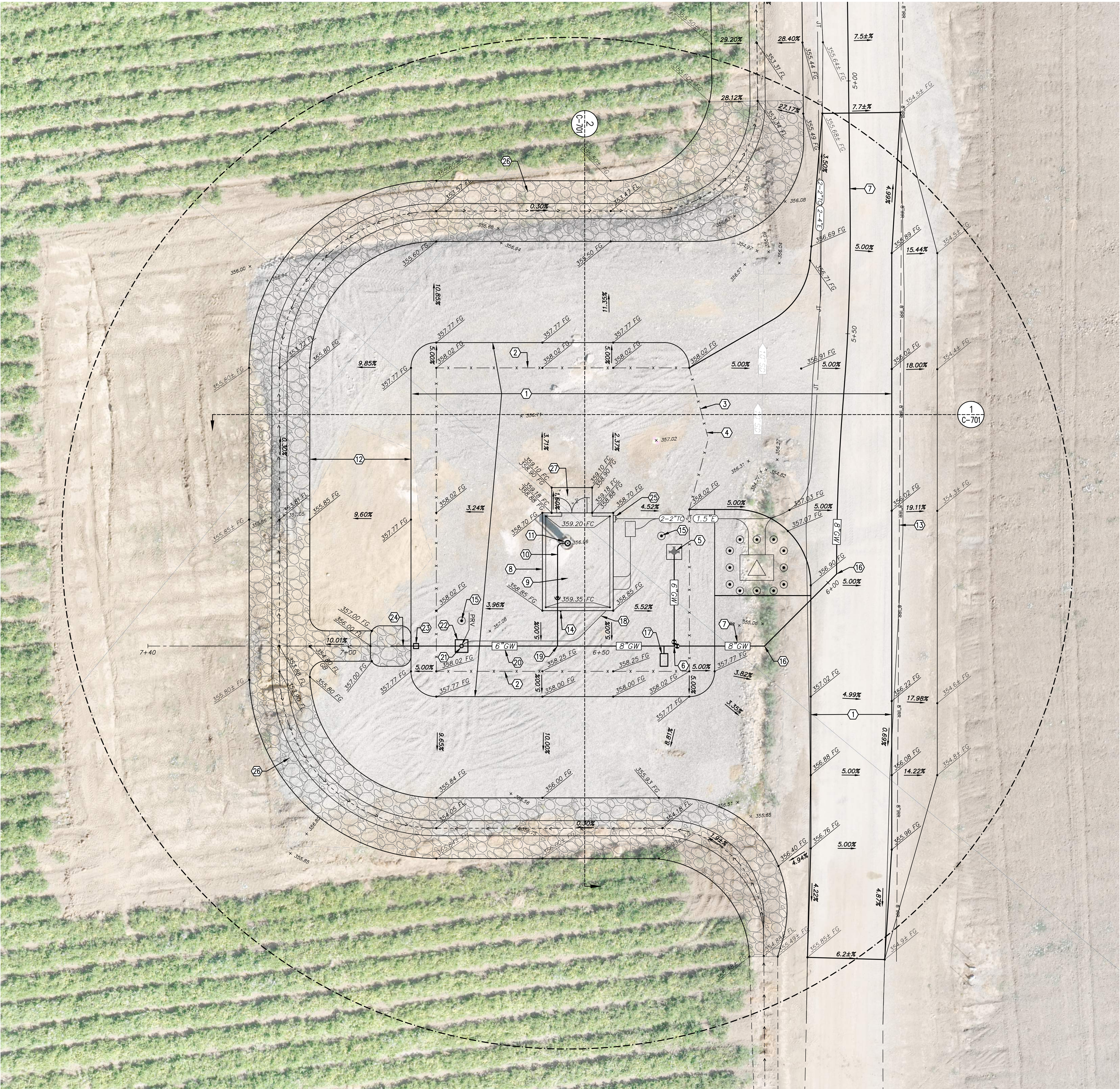
1 PRESSURE RELIEF VALVE ASSEMBLY  
NTS

CONSTRUCTION NOTES:

1. INSTALL 8" DIA. PVC C900 DR18 WATER LINE PER SCSCS, SEE DETAIL 3/C-601.
2. ALL ELECTRICAL INSTALLATIONS TO COMPLY WITH THE ELECTRICAL PLANS BY M. NEILS.
3. INSTALL TELECOM VAULT PER DETAIL 2/C-603.
4. INSTALL 1" COMBINATION AIR/VACUUM VALVE PER DETAIL 1/C-601.
5. INSTALL 8"x6" TEE WITH 8" GATE VALVE GOING EAST AND 6" GATE VALVE GOING NORTH PER DETAIL 5/C-601.
6. INSTALL JOINT TRENCH PER DETAIL 3/C-603.
7. HATCHING DENOTES INSTALLATION OF CALTRANS CLASS 1 ROCK SLOPE PROTECTION ON CALTRANS CLASS 8 ROCK SLOPE PROTECTION FABRIC. EXCAVATE AS NECESSARY SO THAT THE TOP OF THE ROCKS ARE FLUSH WITH THE FINISHED GRADE.
8. INSTALL FIRE HYDRANT PER DETAILS 4 & 7/C-601.
9. INSTALL 6" OF 3/4" CLASS 2 AB AT 95% MRC OVER TENSAR BX1100 GEOGRID (OR EQUIVALENT) OVER COMPACTED SUBGRADE PER THE GEOTECHNICAL REPORT.
10. INSTALL 8"x6" REDUCER WITH RESTRAINED FITTINGS PRIOR TO TEE PER SCSCS.
11. INSTALL 6" DIA. DUCTILE IRON PIPE WITH RESTRAINED JOINTS PER SCSCS. BURIED PIPING SHALL BE ENCASED WITH 8-MIL POLYETHYLENE PER AWWA C105.
12. CONSTRUCT CONCRETE THRUST BLOCK AGAINST UNDISTURBED EARTH OR EARTH COMPACTED TO 90% MRC. USE SCSCS CLASS "A-2", 5-SACK CONCRETE MIX WITH 3/4" MAX. COARSE AGGREGATE SIZE AND 3" MAX. SLUMP. ALL EXPOSED EDGES TO HAVE 0.5" TOOLED RADIUS. SLOPE TOP TO DRAIN. COORDINATE WITH THE ENGINEER.
13. INSTALL 6" GATE VALVE WITH HANDWHEEL PER SCSCS.
14. INSTALL 1" CONDUIT AND WIRING FROM PRV LIMIT SWITCH TO PANEL CP4. USE SCH. 40 PVC CONDUIT UNDERGROUND WITH PVC COATED GALVANIZED RIGID STEEL RISERS AND ABOVE-GRADE CONDUIT, AND LIQUID-TIGHT FLEXIBLE CONDUIT TO SWITCH.
15. INSTALL 6" PRV: BERMAD MODEL WW-6"-730-03-00-A-C-A5-EB-000-CB-S6 QUICK ACTING PRESSURE RELIEF VALVE (PRV) WITH ANGLE PATTERN DUCTILE IRON BODY, ANSI-150 FLANGED ENDS, FUSION BONDED EPOXY COATING, COPPER TUBING & BRASS FITTINGS, PRESSURE GAUGE WITH ISOLATION VALVE, ADJUSTABLE SETTING, OPENING AND CLOSING SPEED CONTROL, ELECTRIC LIMIT SWITCH AND 6" FLANGED, RESILIENT SEAT, GATE-TYPE ISOLATION VALVE (WITH HANDWHEEL), VALVE "OPEN" PRESSURE SETTING TO BE 150 PSI. COORDINATE INSTALLATION AND VALVE ADJUSTMENT WITH THE ENGINEER. CONTRACTOR TO PROVIDE EVIDENCE OF VALVE INSTALLATION, SET-UP AND COMMISSIONING CERTIFICATION BY MFR'S REP.
16. INSTALL 6" MORRILL AMS SERIES FLANGED SINGLE SPHERE FLEXIBLE CONNECTOR WITH CONTROL RODS.
17. "FRAME" OPENING IN FENCE TO ACCOMMODATE PRV DISCHARGE PIPE. COORDINATE WITH ENGINEER.
18. INSTALL HEAVY-DUTY, HOT-DIPPED GALV., OR FUSION BONDED EPOXY COATED, STEEL ADJUSTABLE HEIGHT PIPE SUPPORT. ATTACH TO 6" PIPE WITH H-D, HOT-DIPPED GALV. STEEL U-BOLT. ANCHOR TO FOOTING WITH FOUR 1/2"Ø HOT-DIPPED GALV. STEEL ANCHOR BOLTS. COORDINATE SUPPORT HEIGHT WITH ENGINEER.
19. INSTALL 6" ASTM A53, GRADE B, SCH. 40 WELDED STEEL PIPE WITH FUSION BONDED EPOXY EXTERIOR COATING PER AWWA C213.
20. INSTALL STEEL DIFFUSER PLATE TO SPREAD DISCHARGE OVER APPROX. 6'Ø AREA OF COBBLES BELOW. COORDINATE WITH ENGINEER AND ACTUAL PRV OPERATION.
21. CONSTRUCT CONCRETE FOOTING FOR PIPE SUPPORT. REFERENCE NOTE 12.
22. CAREFULLY FILL SUMP WITH 8"-18" ROCK. CONFIGURE ROCK TO MAXIMIZE CONTAINMENT OF DISCHARGE SPLASH WITHIN SUMP. COORDINATE WITH ENGINEER AND ACTUAL PRV OPERATION.
23. LINE EARTH SUMP WITH MIRAFI 600X, OR APPROVED EQUIVALENT, GEOTEXTILE FABRIC.
24. THE BUILDING FLOOR WILL BE SLOPED TOWARDS THE DOORS AS SHOWN. THE PAD GRADE WILL BE 1.5' BELOW FINISHED CONCRETE.

BY		REVISION		DATE	
LAUGENOUR AND MEKLE		TOMMERAASON		No. 59277	
CIVIL ENGINEERING		LAND SURVEYING		PLANNING	
608 Court Street, Woodland, CA 95695		Phone (530) 862-7755		Fax (530) 862-4624	
8in GW PLAN AND PROFILE					
WATER WELL NO. 4 SITE IMPROVEMENTS					
CACHE CREEK CASINO RESORT					
BROOKS, YOLO CO., CA.					
JOB NO. 2303-746					
DESIGNED TCT					
DRAWN MSW					
FILE 2303-746-C-203.DWG					
CHECKED TCT					
DATE 09/05/2025					
SCALE AS SHOWN					
DRAWING					
C-203					
SHEET 8 OF 17					
YOWN					





GENERAL NOTES

- UNLESS SHOWN OR SPECIFIED OTHERWISE, ALL WORK SHALL BE IN ACCORDANCE WITH THESE PLANS AND WITH THE LATEST EDITION OF THE COUNTY OF SACRAMENTO PUBLIC WORKS AGENCY STANDARD CONSTRUCTION SPECIFICATIONS (SCSCS).
- SEE SHEET C-002 FOR ADDITIONAL GENERAL NOTES.

CONSTRUCTION NOTES

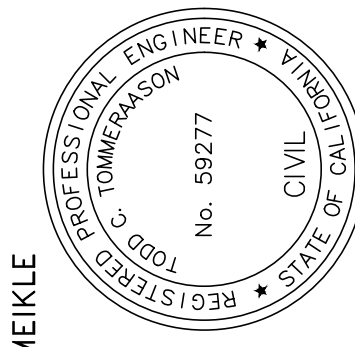
- INSTALL 6" OF 3/4" CLASS 2 AB AT 95% MRC OVER TENSAR BX1100 GEOGRID (OR EQUIVALENT) OVER COMPACTED SUBGRADE.
- 8" CHAIN LINK FENCE WITH 45" EXTENSION ARMS AND 3 STRANDS OF BARBED WIRE PER C-602.
- 8" CHAIN LINK FENCE GATES, WITH EXTENSION ARMS AND 3 STRANDS OF BARBED WIRE, PER C-602.
- OWNER TO FURNISH PADLOCK FOR GATE. CONTRACTOR TO FURNISH AND INSTALL KNOX BOX ON GATE FOR USE BY FIRE DEPT.
- INSTALL FIRE HYDRANT PER DETAILS 4 & 7/C-601.
- INSTALL 8"x8" TEE WITH 8" GATE VALVE GOING EAST AND 6" GATE VALVE GOING NORTH PER DETAIL 5/C-601.
- INSTALL 8" DIA. PVC C900 DR18 WATER LINE PER SCSCS, SEE DETAIL 3/C-601.
- PUMPHOUSE PER ARCHITECTURAL AND STRUCTURAL DRAWINGS.
- SLOPE PUMPHOUSE REINFORCED CONCRETE FLOOR TO DRAIN TO DOORWAY. 12" THICK CONCRETE FLOOR ON 6" LAYER OF 3/4" CRUSHED ROCK PER STRUCTURAL DRAWINGS. EARTH SUBGRADE PREPARATION PER THE GEOTECHNICAL REPORT.
- DETAIL PENDING FOR WELLHEAD DISCHARGE PIPING.
- DETAIL PENDING FOR WELLHEAD CONSTRUCTION DETAILS.
- OWNER TO MAINTAIN 20' WIDE FIRE BREAK AROUND PERIMETER OF FACILITY YARD.
- CAUTION!!! LOCATION OF EX. PVC IRRIGATION PIPELINE IS UNKNOWN. POT HOLE AND COORDINATE WITH ENGINEER.
- INSULATED HOSE BIBB WITH VACUUM BREAKER PER MECHANICAL DRAWINGS.
- INSTALL BARRIER POSTS PER DTL. 8/C-601. COORDINATE POSITIONS WITH ENGINEER.
- INSTALL 45" FITTING WITH RESTRAINED JOINTS PER SCSCS.
- INSTALL 1" COMBINATION AIR/VACUUM VALVE PER DETAIL 1/C-601.
- INSTALL 1" CONDUIT AND WIRING FROM PRV LIMIT SWITCH TO PANEL CP4. USE SCH. 40 PVC CONDUIT UNDERGROUND WITH PVC COATED GALVANIZED RIGID STEEL RISERS AND ABOVE-GRADE CONDUIT, AND LIQUID-TIGHT FLEXIBLE CONDUIT TO SWITCH.
- INSTALL 6" DIP TEE WITH THRUST BLOCK AND 6"x8" REDUCER TO THE EAST PER SCSCS.
- INSTALL 6" DUCTILE IRON PIPE WITH RESTRAINED JOINTS. DIP AND FITTINGS SHALL COMPLY WITH SCSCS SECTION 50-25 AND BURIED PIPING SHALL BE ENCASED WITH 8-MIL POLYETHYLENE PER AWWA C105.
- INSTALL 6" PRV: BERMAID MODEL WW-6"-730-03-00-A-C-A5-EB-000-CB-S6 QUICK ACTING PRESSURE RELIEF VALVE (PRV) WITH ANGLE PATTERN DUCTILE IRON BODY, ANSI-150 FLANGED ENDS, FUSION BONDED EPOXY COATING, COPPER TUBING & BRASS FITTINGS, PRESSURE GAUGE WITH ISOLATION VALVE, ADJUSTABLE SETTING, OPENING AND CLOSING SPEED CONTROL, ELECTRIC LIMIT SWITCH AND 6" FLANGED, RESILIENT SEAT, GATE-TYPE ISOLATION VALVE (WITH HANDWHEEL). VALVE "OPEN" PRESSURE SETTING TO BE 150 PSI. COORDINATE INSTALLATION AND VALVE ADJUSTMENT WITH THE ENGINEER. CONTRACTOR TO PROVIDE EVIDENCE OF VALVE INSTALLATION, SET-UP AND COMMISSIONING CERTIFICATION BY MFR'S REP.
- CONSTRUCT CONCRETE THRUST BLOCK AGAINST UNDISTURBED EARTH OR EARTH COMPACTED TO 90% MRC. USE SCSCS CLASS "A-2", 6-SACK CONCRETE MIX WITH 3/4" MAX. COARSE AGGREGATE SIZE AND 3" MAX. SLUMP. ALL EXPOSED EDGES TO HAVE 0.5" TOOLED RADIUS. SLOPE TOP TO DRAIN. COORDINATE WITH THE ENGINEER. SEE DETAIL 1/C-203.
- CONSTRUCT CONCRETE FOOTING FOR PIPE SUPPORT. REFERENCE NOTE 22.
- SEE DETAIL 1/C-203 FOR PRV, VALVES AND PIPING INSTALLATION.
- ELECTRICAL SERVICE DISCONNECT PER THE ELECTRICAL PLANS.
- HATCHING DENOTES INSTALLATION OF CALTRANS CLASS 1 ROCK SLOPE PROTECTION ON CALTRANS CLASS 8 ROCK SLOPE PROTECTION FABRIC. EXCAVATE AS NECESSARY SO THAT THE TOP OF THE ROCKS ARE FLUSH WITH THE FINISHED GRADE.
- INSTALL CONCRETE WALK PER DETAIL 6/C-601.
- PAD CONSTRUCTION TO COMPLY WITH THE GEOTECHNICAL INVESTIGATION ADDENDUM BY THE GEOTECHNICAL ENGINEER.

WELL NO 4 SITE GRADING PLAN  
WATER WELL NO. 4 SITE IMPROVEMENTS  
CACHE CREEK CASINO RESORT  
BROOKS, YOLO CO., CA.

JOB NO.	2303-746
DESIGNED	TCT
DRAWN	MSW
FILE	2303-746-C-301.DWG
CHECKED	TCT
DATE	09/05/2025
SCALE	1"=10'
DRAWING	C-301
SHEET 9 OF 17	
YOWN	

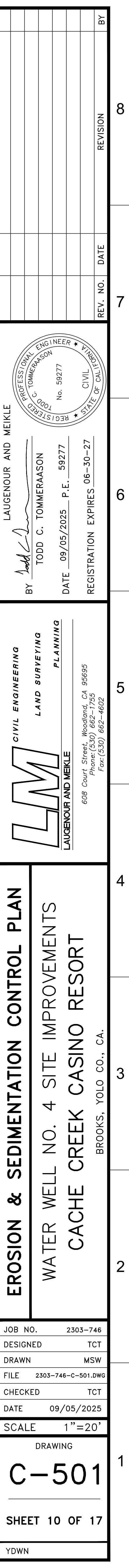
LAUGENOUR AND MEKLE  
CIVIL ENGINEERING  
LAND SURVEYING  
PLANNING  
608 Court Street, Woodland, CA 95695  
Phone (530) 862-7755  
Fax (530) 862-4622

BY: TODD C. TOMMERASON  
DATE: 09/05/2025  
P.E. 59277  
REGISTRATION EXPIRES 06-30-27

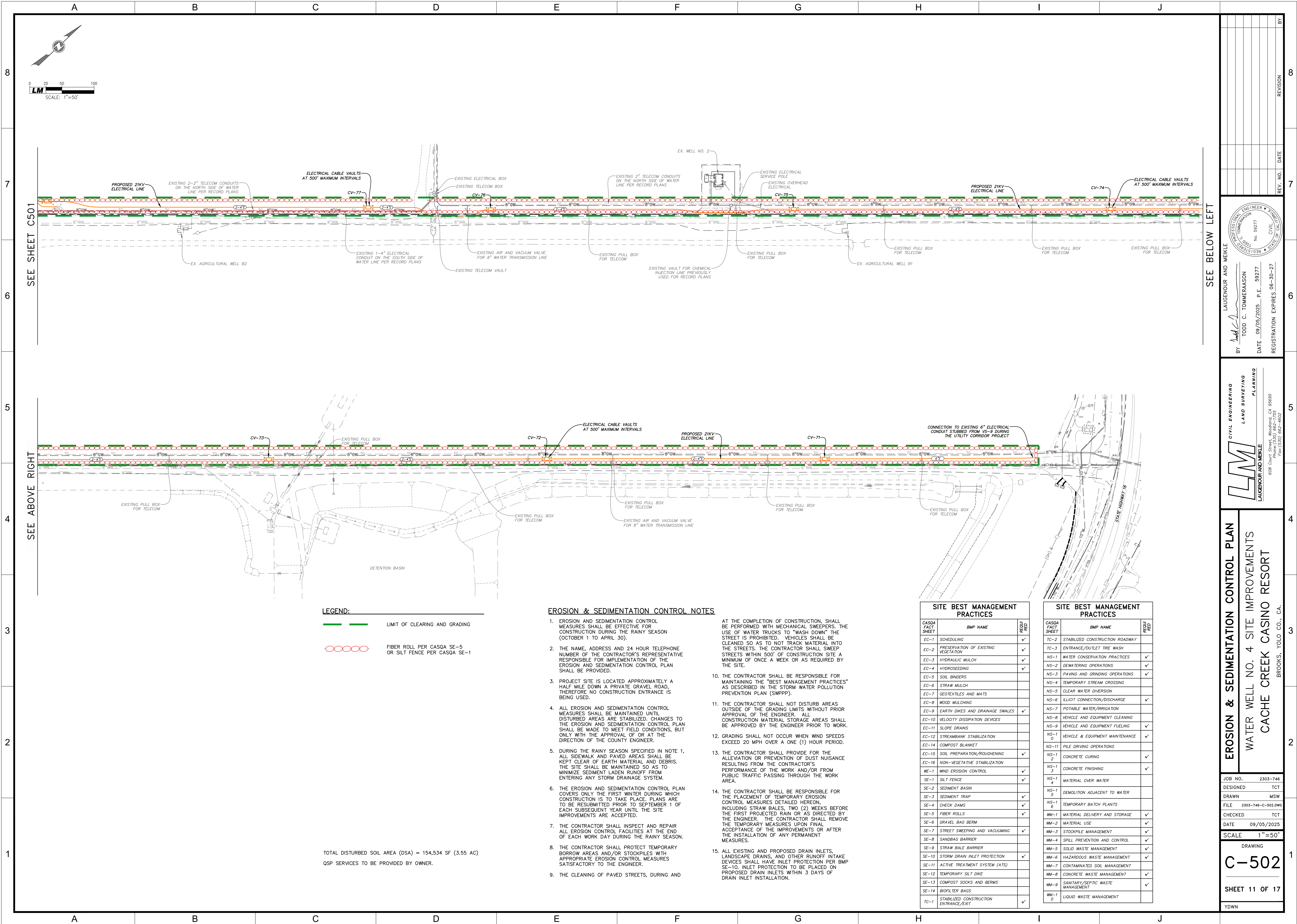


REV. NO.	DATE	REVISION	BY
8			
7			
6			
5			
4			
3			
2			
1			









**LEGEND:**

— LIMIT OF CLEARING AND GRADING

○ ○ ○ ○ ○ FIBER ROLL PER CASQA SE-5 OR SILT FENCE PER CASQA SE-1

**EROSION & SEDIMENTATION CONTROL NOTES**

1. EROSION AND SEDIMENTATION CONTROL MEASURES SHALL BE EFFECTIVE FOR CONSTRUCTION DURING THE RAINY SEASON (OCTOBER 1 TO APRIL 30).

2. THE NAME, ADDRESS AND 24 HOUR TELEPHONE NUMBER OF THE CONTRACTOR'S REPRESENTATIVE RESPONSIBLE FOR IMPLEMENTATION OF THE EROSION AND SEDIMENTATION CONTROL PLAN SHALL BE PROVIDED.

3. PROJECT SITE IS LOCATED APPROXIMATELY A HALF MILE DOWN A PRIVATE GRAVEL ROAD, THEREFORE NO CONSTRUCTION ENTRANCE IS BEING USED.

4. ALL EROSION AND SEDIMENTATION CONTROL MEASURES SHALL BE MAINTAINED UNTIL DISTURBED AREAS ARE STABILIZED. CHANGES TO THE EROSION AND SEDIMENTATION CONTROL PLAN SHALL BE MADE TO MEET FIELD CONDITIONS, BUT ONLY WITH THE APPROVAL OF OR AT THE DIRECTION OF THE COUNTY ENGINEER.

5. DURING THE RAINY SEASON SPECIFIED IN NOTE 1, ALL SIDEWALK AND PAVED AREAS SHALL BE KEPT CLEAR OF EARTH MATERIAL AND DEBRIS. THE SITE SHALL BE MAINTAINED SO AS TO MINIMIZE SEDIMENT LADEN RUNOFF FROM ENTERING ANY STORM DRAINAGE SYSTEM.

6. THE EROSION AND SEDIMENTATION CONTROL PLAN COVERS ONLY THE FIRST WINTER DURING WHICH CONSTRUCTION IS TO TAKE PLACE. PLANS ARE TO BE RESUBMITTED PRIOR TO SEPTEMBER 1 OF EACH SUBSEQUENT YEAR UNTIL THE SITE IMPROVEMENTS ARE ACCEPTED.

7. THE CONTRACTOR SHALL INSPECT AND REPAIR ALL EROSION CONTROL FACILITIES AT THE END OF EACH WORK DAY DURING THE RAINY SEASON.

8. THE CONTRACTOR SHALL PROTECT TEMPORARY BORROW AREAS AND/OR STOCKPILES WITH APPROPRIATE EROSION CONTROL MEASURES SATISFACTORY TO THE ENGINEER.

9. THE CLEANING OF PAVED STREETS, DURING AND
- AT THE COMPLETION OF CONSTRUCTION, SHALL BE PERFORMED WITH MECHANICAL SWEEPERS. THE USE OF WATER TRUCKS TO "WASH DOWN" THE STREET IS PROHIBITED. VEHICLES SHALL BE CLEANED SO AS TO NOT TRACK MATERIAL INTO THE STREETS. THE CONTRACTOR SHALL SWEEP STREETS WITHIN 500' OF CONSTRUCTION SITE A MINIMUM OF ONCE A WEEK OR AS REQUIRED BY THE SITE.

10. THE CONTRACTOR SHALL BE RESPONSIBLE FOR MAINTAINING THE "BEST MANAGEMENT PRACTICES" AS DESCRIBED IN THE STORM WATER POLLUTION PREVENTION PLAN (SWPPP).

11. THE CONTRACTOR SHALL NOT DISTURB AREAS OUTSIDE OF THE GRADING LIMITS WITHOUT PRIOR APPROVAL OF THE ENGINEER. ALL CONSTRUCTION MATERIAL STORAGE AREAS SHALL BE APPROVED BY THE ENGINEER PRIOR TO WORK.

12. GRADING SHALL NOT OCCUR WHEN WIND SPEEDS EXCEED 20 MPH OVER A ONE (1) HOUR PERIOD.

13. THE CONTRACTOR SHALL PROVIDE FOR THE ALLEVATION OR PREVENTION OF DUST NUISANCE RESULTING FROM THE CONTRACTOR'S PERFORMANCE OF THE WORK AND/OR FROM PUBLIC TRAFFIC PASSING THROUGH THE WORK AREA.

14. THE CONTRACTOR SHALL BE RESPONSIBLE FOR THE PLACEMENT OF TEMPORARY EROSION CONTROL MEASURES DETAILED HEREON, INCLUDING STRAW BALES, TWO (2) WEEKS BEFORE THE FIRST PROJECTED RAIN OR AS DIRECTED BY THE ENGINEER. THE CONTRACTOR SHALL REMOVE THE TEMPORARY MEASURES UPON FINAL ACCEPTANCE OF THE IMPROVEMENTS OR AFTER THE INSTALLATION OF ANY PERMANENT MEASURES.

15. ALL EXISTING AND PROPOSED DRAIN INLETS, LANDSCAPE DRAINS, AND OTHER RUNOFF INTAKE DEVICES SHALL HAVE INLET PROTECTION PER BMP SE-10. INLET PROTECTION TO BE PLACED ON PROPOSED DRAIN INLETS WITHIN 3 DAYS OF DRAIN INLET INSTALLATION.

SITE BEST MANAGEMENT PRACTICES		
CASQA FACT SHEET	BMP NAME	REQ'D / FIED
EC-1	SCHEDULING	✓
EC-2	PRESERVATION OF EXISTING VEGETATION	✓
EC-3	HYDRAULIC MULCH	✓
EC-4	HYDROSEEDING	✓
EC-5	SOIL BINDERS	
EC-6	STRAW MULCH	
EC-7	GEOTEXTILES AND MATS	
EC-8	WOOD MULCHING	
EC-9	EARTH DIKES AND DRAINAGE SWALES	✓
EC-10	VELOCITY DISSIPATION DEVICES	
EC-11	SLOPE DRAINS	
EC-12	STREAMBANK STABILIZATION	
EC-14	COMPOST BLANKET	
EC-15	SOIL PREPARATION/ROUGHENING	✓
EC-16	NON-VEGETATIVE STABILIZATION	
WE-1	WIND EROSION CONTROL	
SE-1	SILT FENCE	✓
SE-2	SEDIMENT BASIN	
SE-3	SEDIMENT TRAP	✓
SE-4	CHECK DAMS	✓
SE-5	FIBER ROLLS	✓
SE-6	GRAVEL BAG BERM	
SE-7	STREET SWEEPING AND VACUUMING	✓
SE-8	SANDBAG BARRIER	
SE-9	STRAW BALE BARRIER	
SE-10	STORM DRAIN INLET PROTECTION	✓
SE-11	ACTIVE TREATMENT SYSTEM (ATS)	
SE-12	TEMPORARY SILT DIKE	
SE-13	COMPOST SOCKS AND BERMS	
SE-14	BIOFILTER BAGS	
TC-1	STABILIZED CONSTRUCTION ENTRANCE/EXIT	✓

SITE BEST MANAGEMENT PRACTICES		
CASQA FACT SHEET	BMP NAME	REQ'D / FIED
TC-2	STABILIZED CONSTRUCTION ROADWAY	
TC-3	ENTRANCE/OUTLET TIRE WASH	
NS-1	WATER CONSERVATION PRACTICES	✓
NS-2	DEWATERING OPERATIONS	✓
NS-3	PAVING AND GRINDING OPERATIONS	✓
NS-4	TEMPORARY STREAM CROSSING	
NS-5	CLEAR WATER DIVERSION	
NS-6	ILLICIT CONNECTION/DISCHARGE	✓
NS-7	POTABLE WATER/IRRIGATION	
NS-8	VEHICLE AND EQUIPMENT CLEANING	
NS-9	VEHICLE AND EQUIPMENT FUELING	✓
NS-10	VEHICLE & EQUIPMENT MAINTENANCE	✓
NS-11	PILE DRIVING OPERATIONS	
NS-12	CONCRETE CURING	✓
NS-13	CONCRETE FINISHING	✓
NS-14	MATERIAL OVER WATER	
NS-15	DEMOLITION ADJACENT TO WATER	
NS-16	TEMPORARY BATCH PLANTS	
WM-1	MATERIAL DELIVERY AND STORAGE	✓
WM-2	MATERIAL USE	✓
WM-3	STOCKPILE MANAGEMENT	✓
WM-4	SPILL PREVENTION AND CONTROL	✓
WM-5	SOLID WASTE MANAGEMENT	✓
WM-6	HAZARDOUS WASTE MANAGEMENT	✓
WM-7	CONTAMINATED SOIL MANAGEMENT	
WM-8	CONCRETE WASTE MANAGEMENT	✓
WM-9	SANITARY/SEPTIC WASTE MANAGEMENT	✓
WM-10	LIQUID WASTE MANAGEMENT	

**EROSION & SEDIMENTATION CONTROL PLAN**

WATER WELL NO. 4 SITE IMPROVEMENTS  
CACHE CREEK CASINO RESORT

BROOKS, YOLO CO., CA.

JOB NO. 2303-746  
DESIGNED TCT  
DRAWN MSW  
FILE 2303-746-C-502.DWG  
CHECKED TCT  
DATE 09/05/2025  
SCALE 1"=50'  
DRAWING  
**C-502**  
SHEET 11 OF 17  
YDWN

**LM** CIVIL ENGINEERING  
LAND SURVEYING  
PLANNING  
LAUGENOUR AND MEKLE  
608 Court Street, Woodland, CA 95695  
Phone (530) 862-7755  
Fax (530) 862-4622

BY *Todd C. Tommerason*  
TODD C. TOMMERASON  
DATE 09/05/2025 P.E. 59277  
REGISTRATION EXPIRES 06-30-27

LAUGENOUR AND MEKLE  
REGISTERED PROFESSIONAL ENGINEER  
No. 59277  
CIVIL  
SITE OF

SEE BELOW LEFT

SEE ABOVE RIGHT

SEE SHEET C501











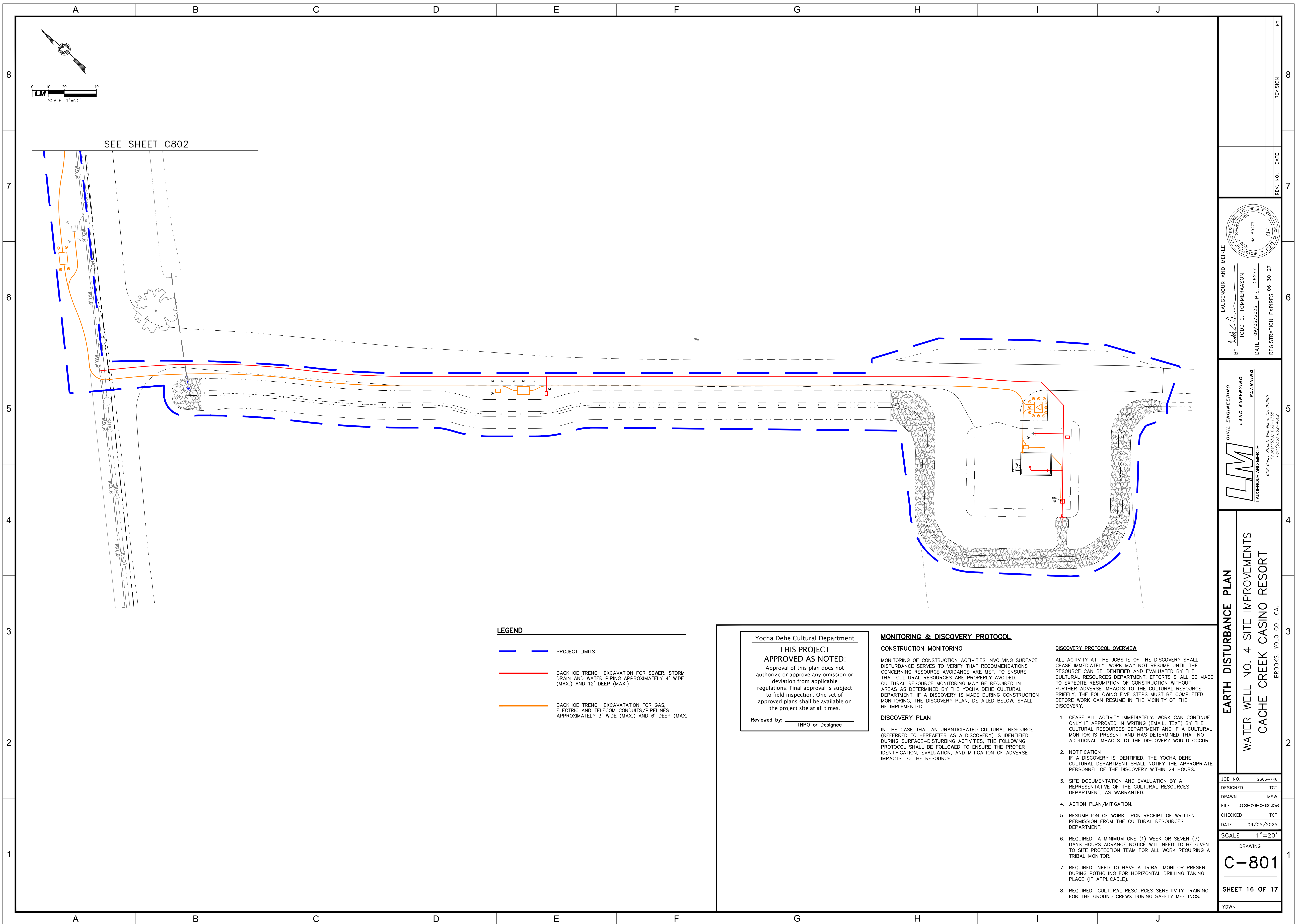


- ### 3 JOINT TRENCH DETAIL

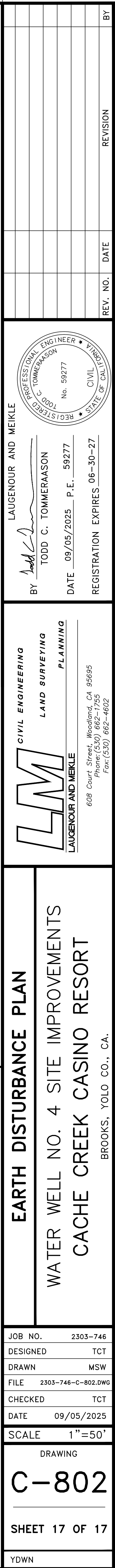












## **Bid Item and Payment Sheet**

## Yocha Dehe Wintun Nation Public Supply Well Replacement Project

### Bid Item and Payment Sheet

Section	TOTAL (\$)
Site Mobilization	\$
Minor Traffic Control: cones and delineators if required (Excludes Traffic Plan, Caltrans, and county Permits)	\$
Electrical Trenching: 4000 lf Trenching/Excavate with Sand Bed & Backfill	\$
Conduit and Pull Box installation	\$
Electrical Wiring: Install wire and 1ech 150KVA 21K to 480/277V Transformer and land and make connections	\$
8" Waterline: 8" PVC 525 lf of 8" Waterline	\$
Demobilization and Site Clean Up	\$
<b>Grand Total</b>	\$
Any other cost items not listed above (please list as separate appendix)	\$
<b>TOTAL LUMP SUM BASE BID</b>	\$

## LIST OF SUBCONTRACTORS

Bidder will use Subcontractors for the Work:      Yes \_\_\_\_\_      No \_\_\_\_\_

If "Yes", provide in the spaces below (a) the name and the location of the place of business of each subcontractor who will perform work or labor or render service to the prime contractor in or about the construction of the Project, or a subcontractor licensed by the state of California who, under subcontract to the prime contractor, specifically fabricates and installs a portion of the Project according to detailed drawings contained in the plans and specifications, in an amount in excess of 1/2 of 1 percent of the prime contractor's total bid, (b) the portion of the Project which will be done by each subcontractor. The prime contractor shall list only one subcontractor for each such portion as is defined by the prime contractor in its bid.

	Subcontractor	
Portion of the Work Activity (e.g. metal building, roof/wall panels, erection)	Name	Location (City)

(Note: Add additional pages if required.)